

iR1200/iR1300 Series

CIRCUIT DIAGRAM

REVISION 0

Canon

SEPT. 2002

FY8-41FM-000

COPYRIGHT © 2002 CANON INC

IMPORTANT

This documentation is published by Canon Inc., Japan, to serve as a source of reference for work in the field.

Specifications and other information contained herein may vary slightly from actual machine values or those found in advertising and other printed matter.

Any questions regarding the information contained herein should be directed to the Copier Service Department of the Sales Company.

This documentation is intended for all sales areas, and may contain information not applicable to certain areas.

Reproduction without permission not allowed.

Use of this manual should be strictly supervised to avoid disclosure of confidential information.

INTRODUCTION

This circuit diagram covers the models shown in the following table. Be sure to have a good understanding of the difference from model to model before referring to this manual.

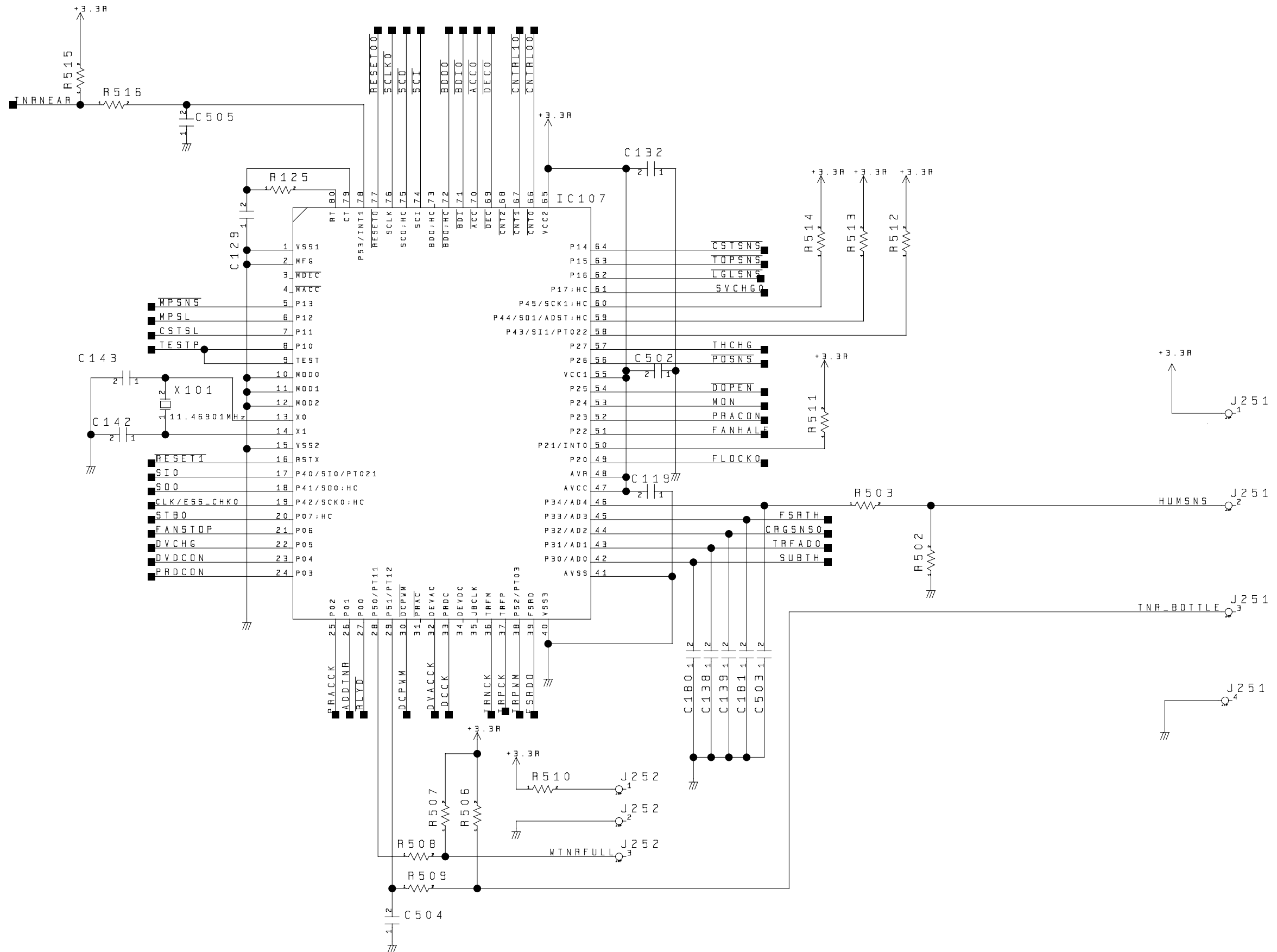
Model	Type code	ADF function	Printer function	Fax function	Cassette	Default Ratio	Power supply
iR1210	MTC		√		500 sheet (A4)	4R3E	230V
	PVZ		√		500 sheet (A4)	4R3E	230V
	QTL		√		250 sheet (A4)	2R2E	230V
	UMA		√		250 sheet (A4)	2R2E	230V
	UVB		√		250 sheet (A4)	2R2E	230V
	UVC		√		250 sheet (A4)	2R2E	230V
	UVD		√		250 sheet (A4)	2R2E	230V
	UVE		√		250 sheet (A4)	2R2E	230V
ZTY			√		250 sheet (Universal)	2R2E	127V
iR1230	MTD	√	√		500 sheet (A4)	4R3E	230V
	MTE	√	√		500 sheet (A4)	4R3E	230V
	QTM	√	√		250 sheet (A4)	2R2E	230V
	UNA	√	√		250 sheet (A4)	2R2E	230V
	UVF	√	√		250 sheet (A4)	2R2E	230V
	UVG	√	√		250 sheet (A4)	2R2E	230V
	UVH	√	√		250 sheet (A4)	2R2E	230V
	UVJ	√	√		250 sheet (A4)	2R2E	230V
iR1270F	MTF	√	√	√	250 sheet (A4)	4R3E	230V
	MTG	√	√	√	500 sheet (A4)	2R2E	230V
	UPA	√	√	√	250 sheet (A4)	4R3E	230V
iR1310	ZTW		√		500 sheet (LTR/LGL)	3R2E	120V
iR1330	ZTZ	√	√		500 sheet (LTR/LGL)	3R2E	120V
iR1370F	ZUB	√	√	√	500 sheet (LTR/LGL)	3R2E	120V

The notation “√” indicates that the item in question is available.

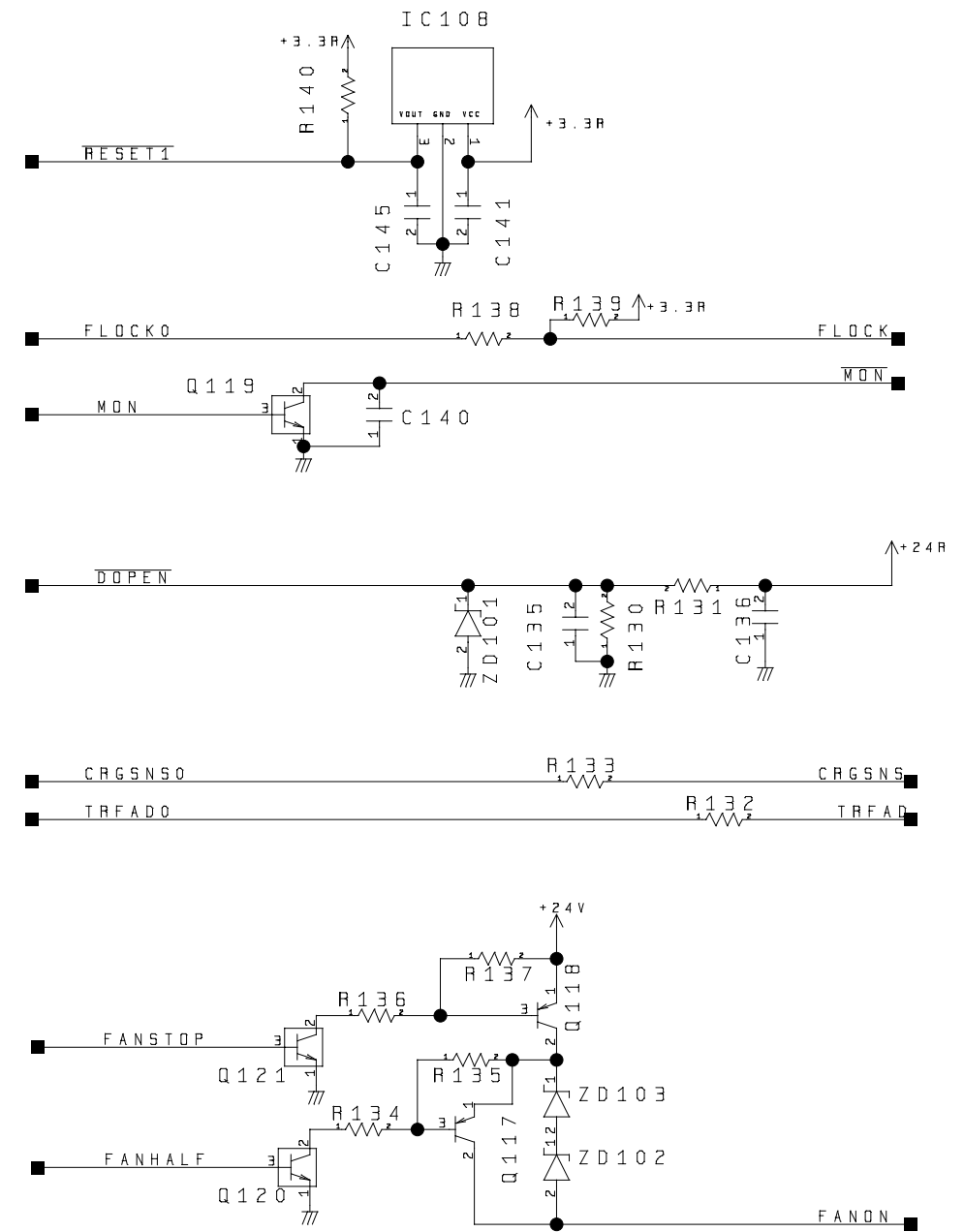
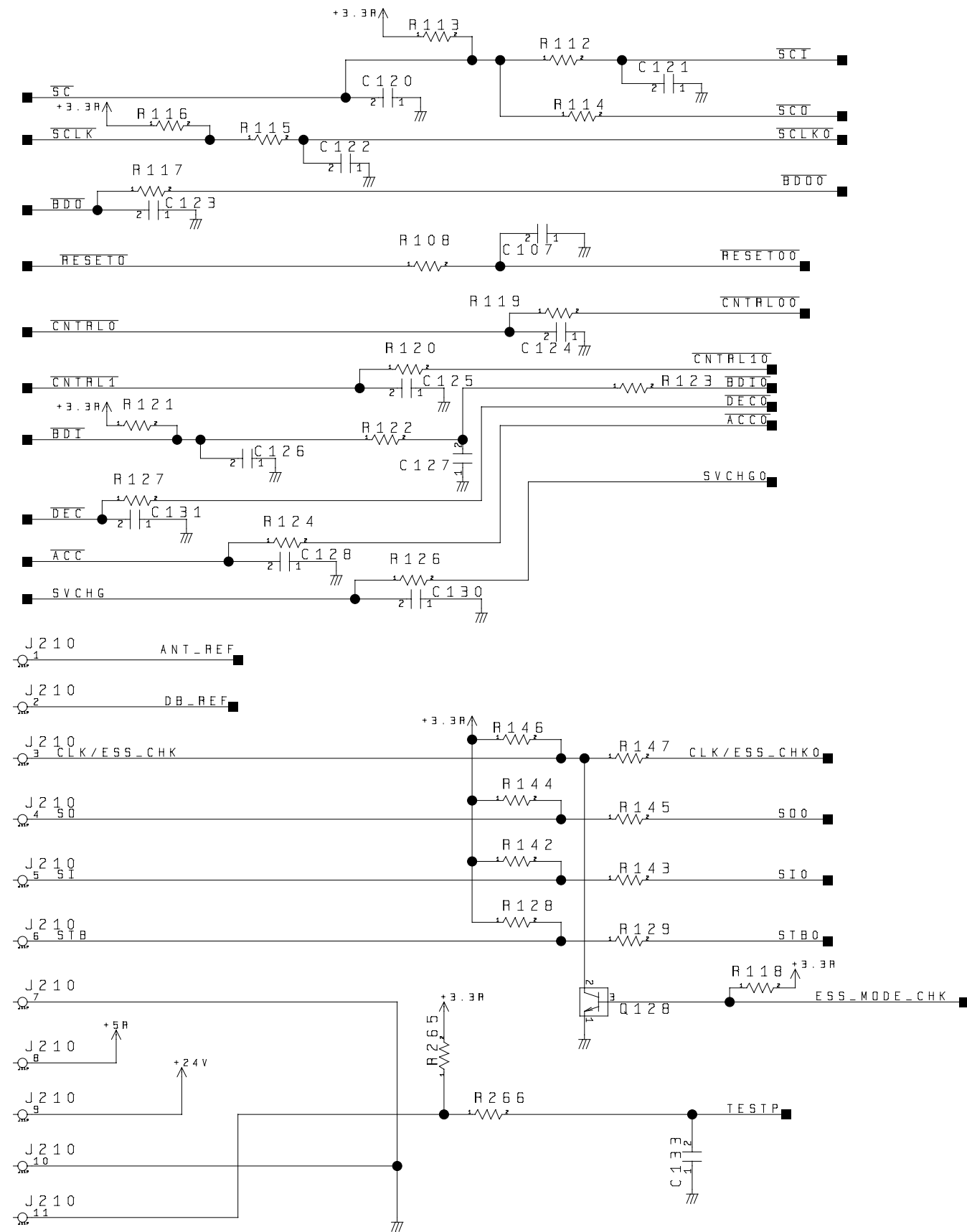
CONTENTS

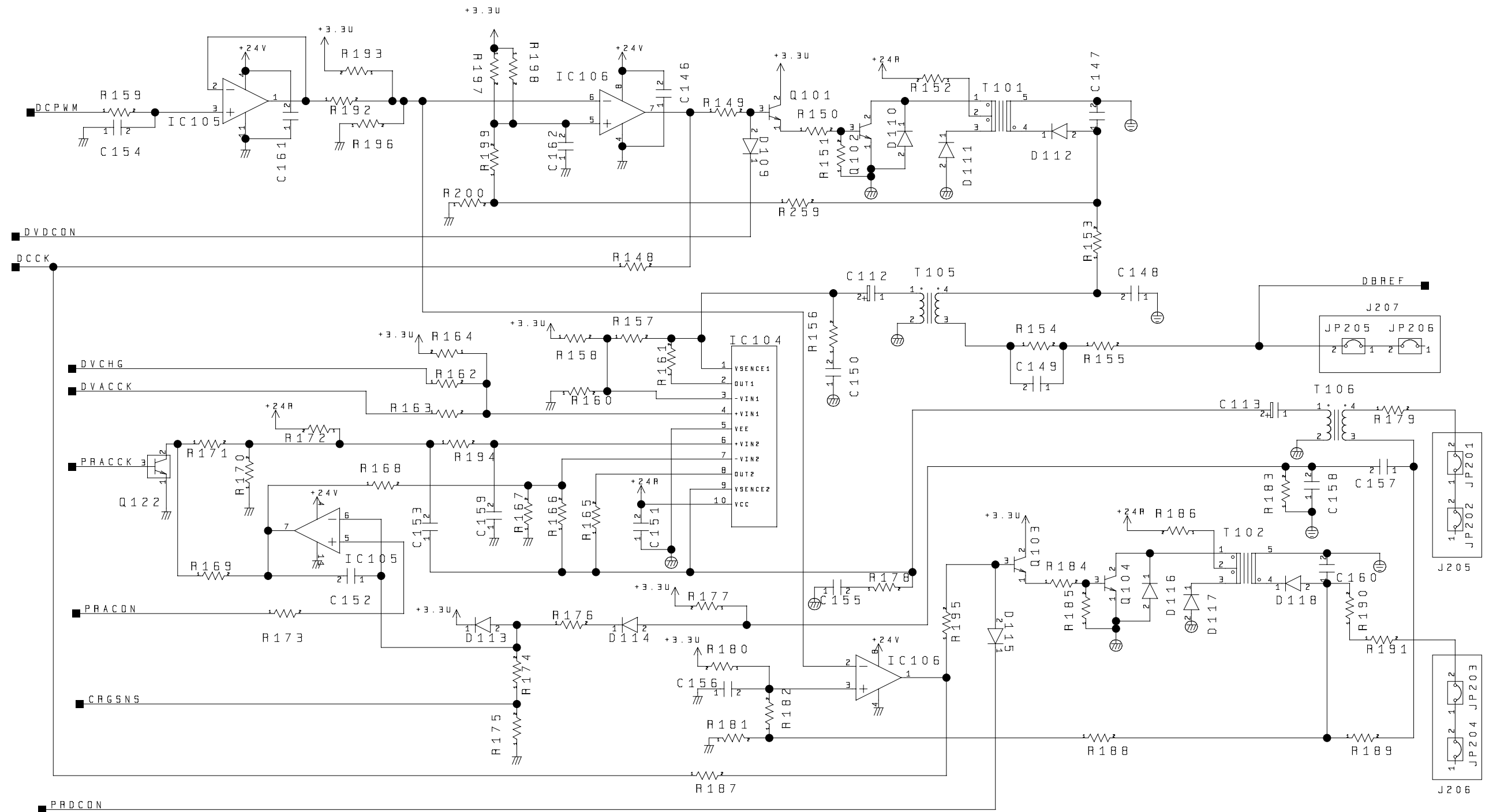
1. DC controller PCB	1
2. Analog processor PCB	7
3. Control panel PCB	9
4. Sensor PCB	10
5. Sensor relay PCB	11
6. NCU PCB (120V/if equipped with fax functions)	12
7. NCU PCB (230V:EURO/if equipped with fax functions)	13
8. NCU PCB (230V:ASIA_OCE/if equipped with fax functions)	16
9. Modular jack PCB (120V/if equipped with fax functions)	19
10. Modular jack PCB (230V:EURO/if equipped with fax functions)	20
11. Modular jack PCB (230V:ASIA_OCE/if equipped with fax functions)	21
12. Printer controller PCB	22

1. DC CONTROLLER PCB
DC CONTROLLER PCB[A501](1/6)

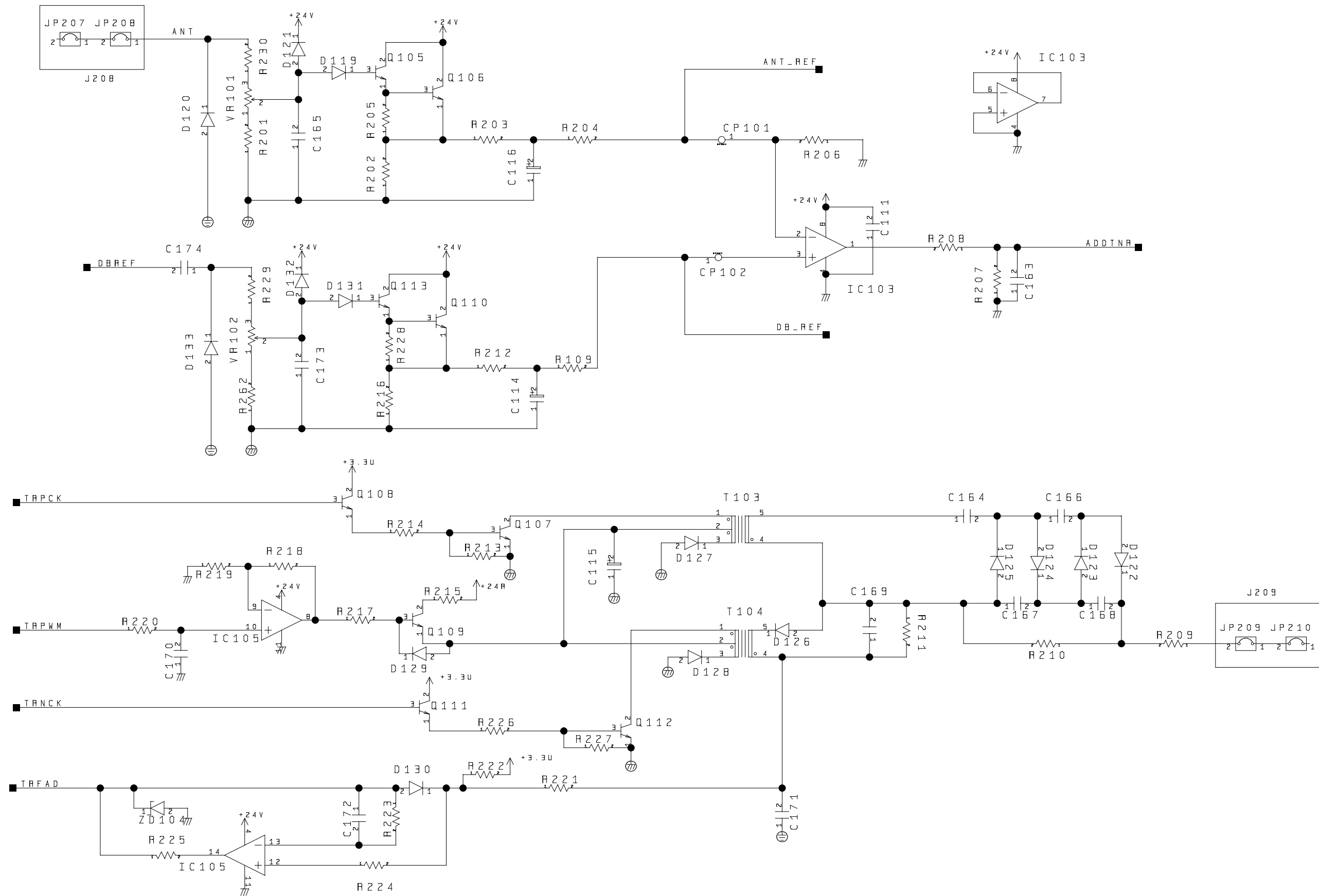


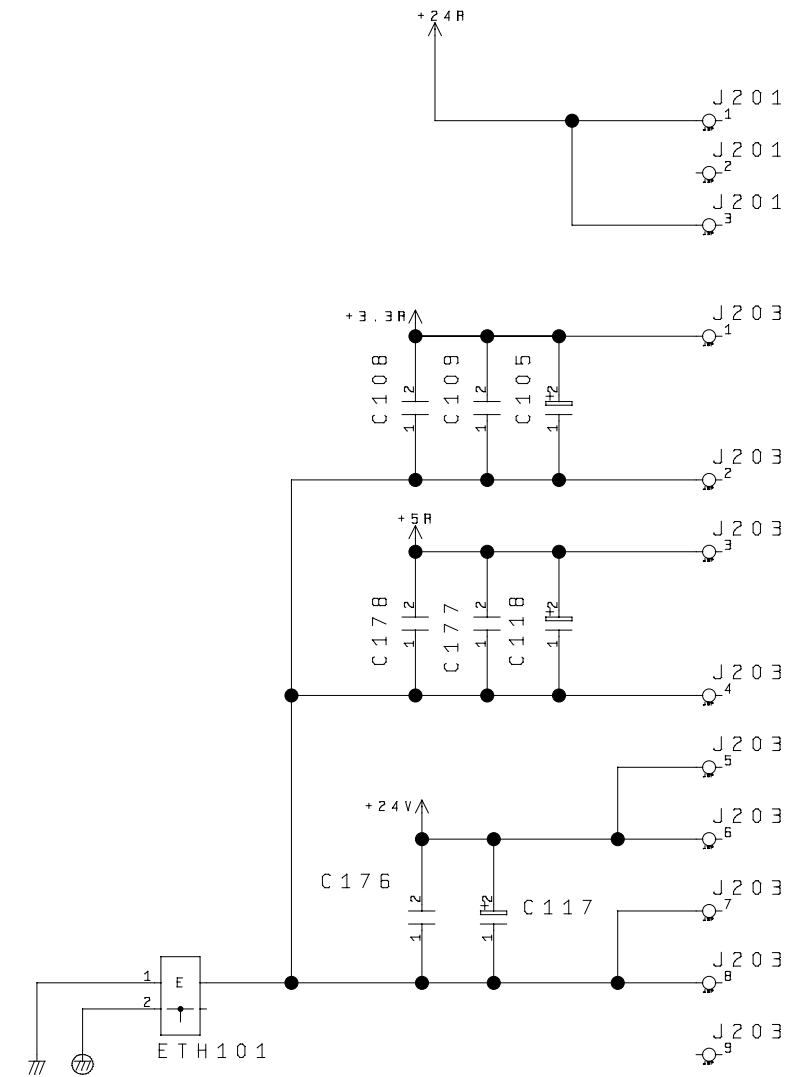
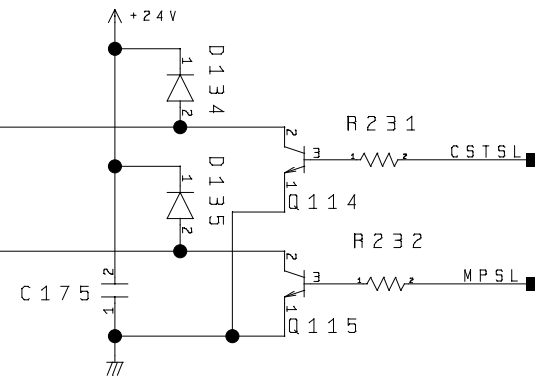
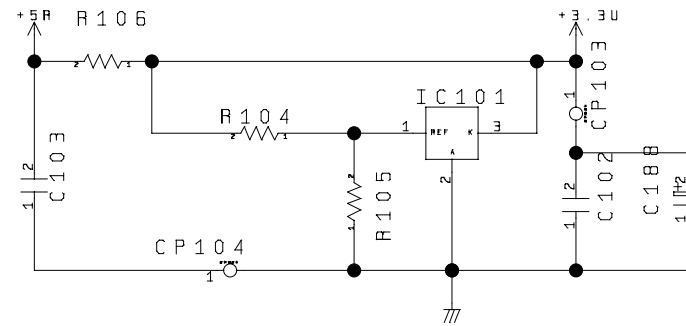
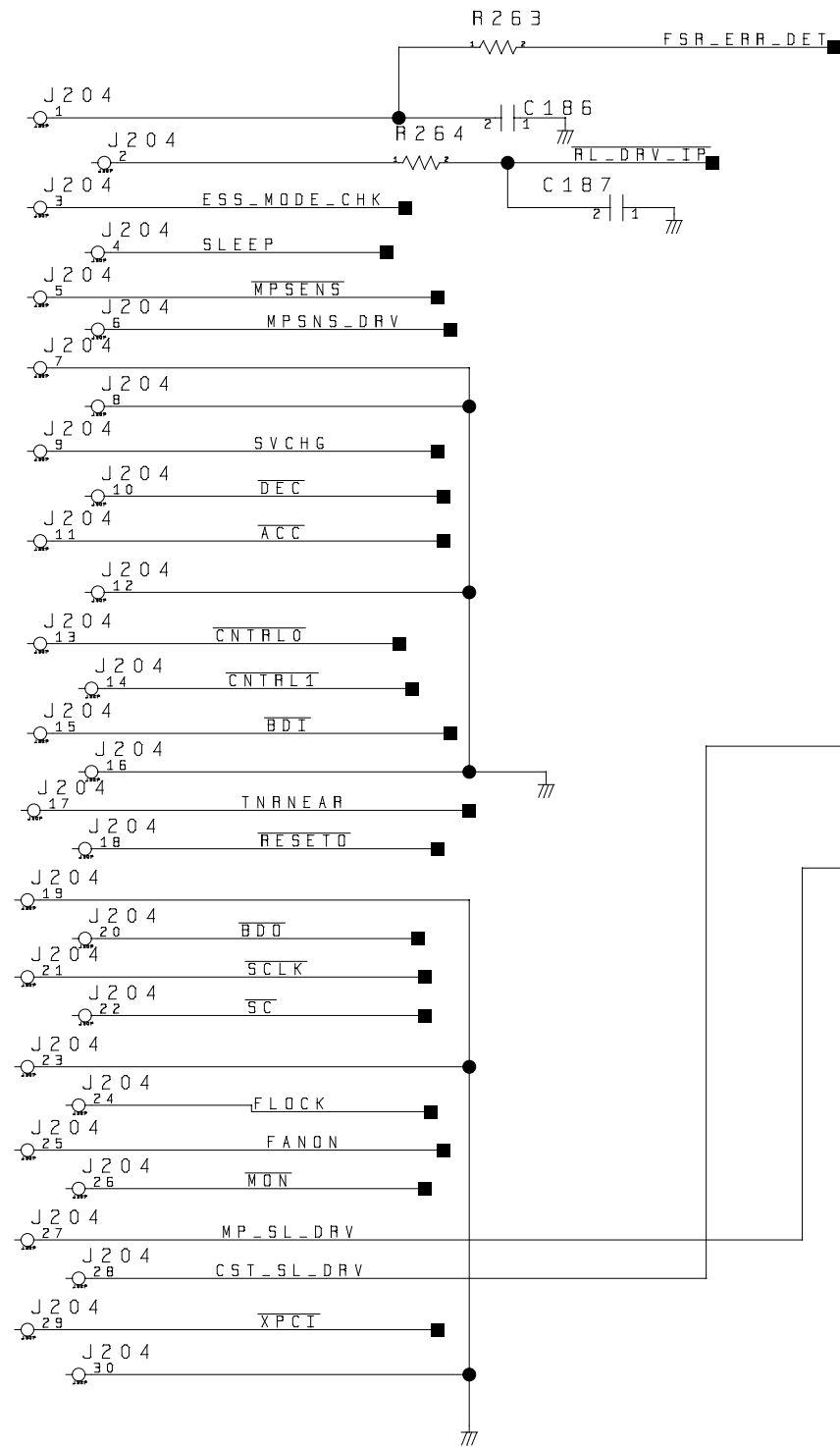
DC CONTROLLER PCB[A502](2/6)

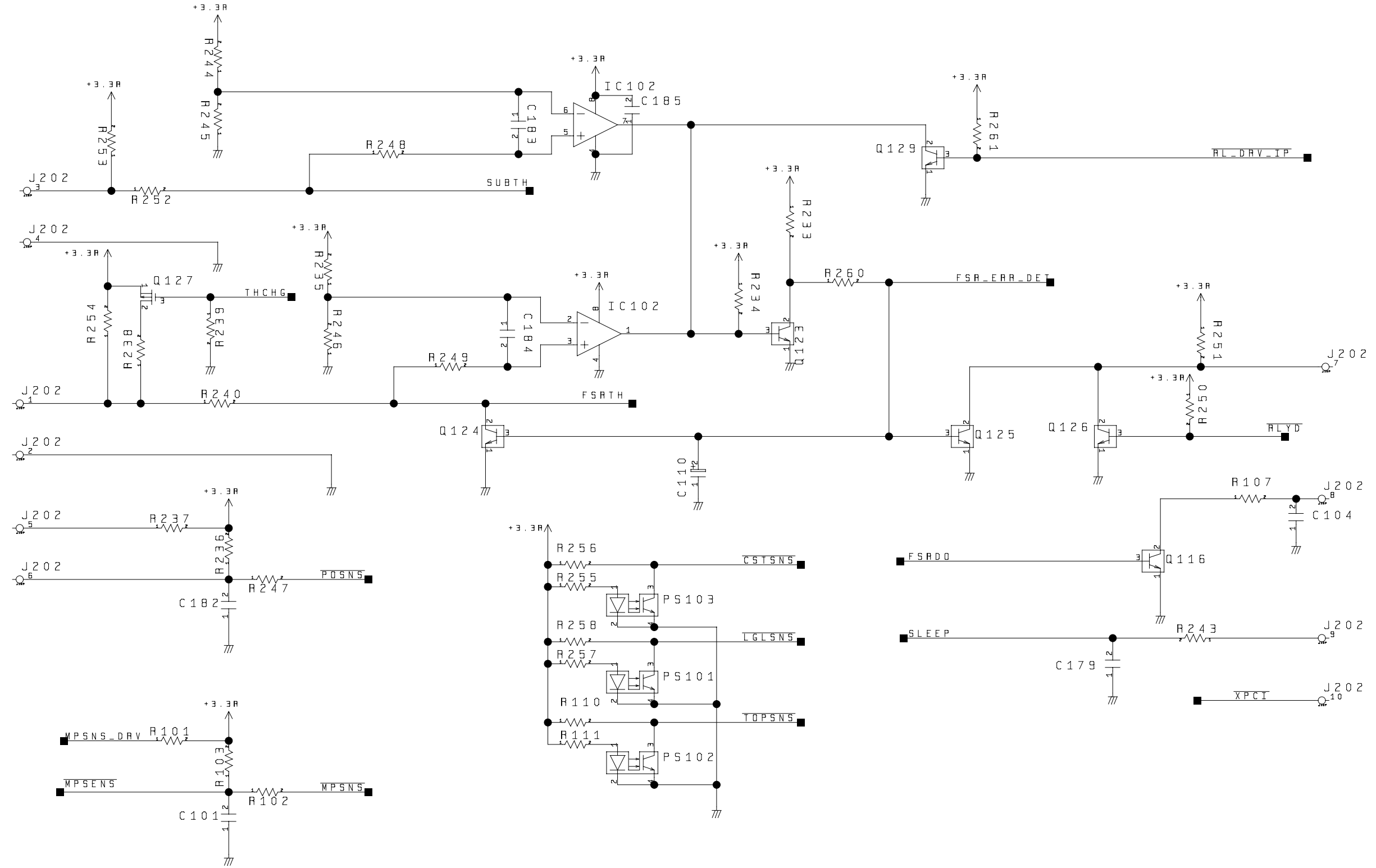


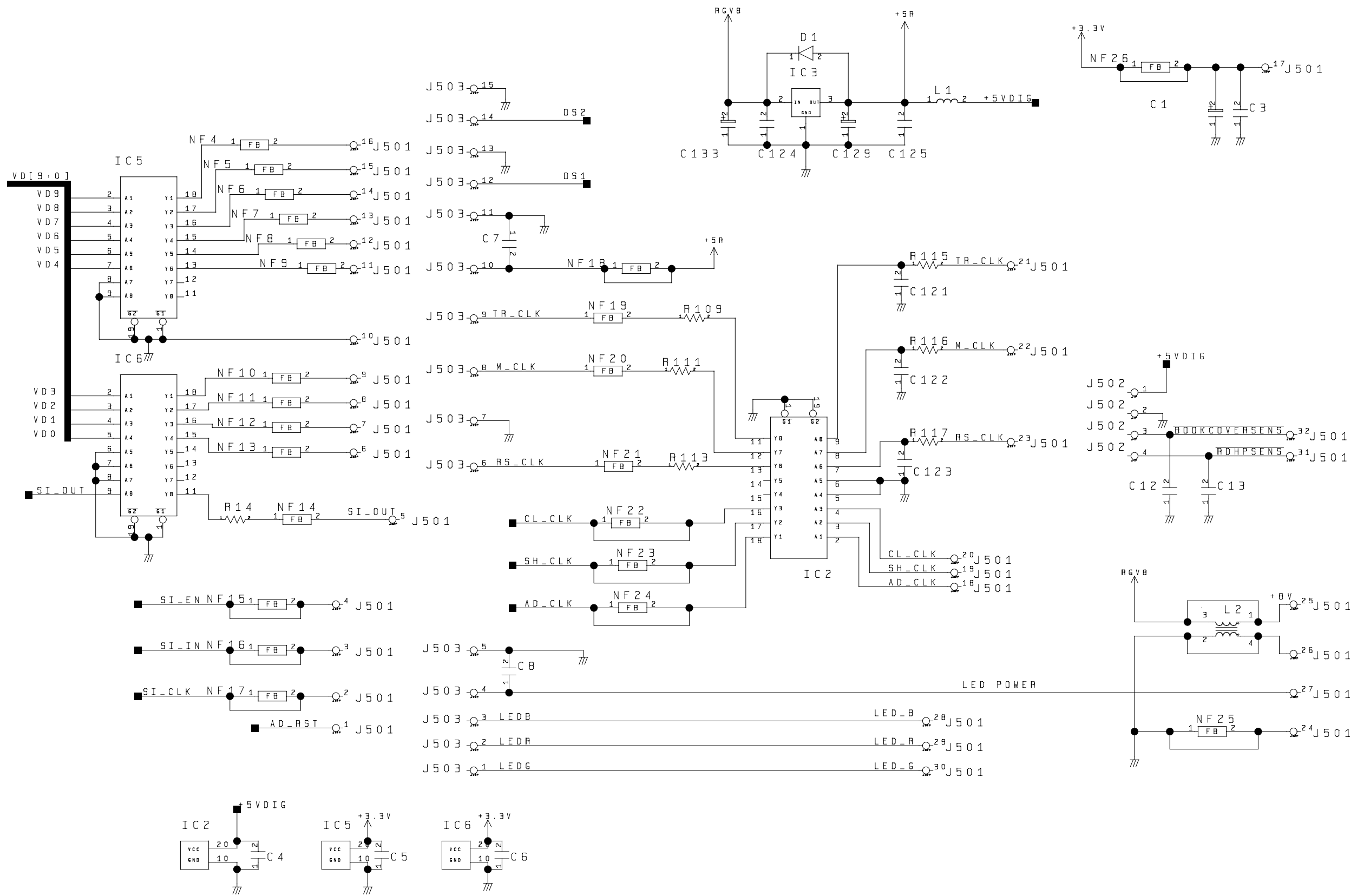


DC CONTROLLER PCB[A504](4/6)

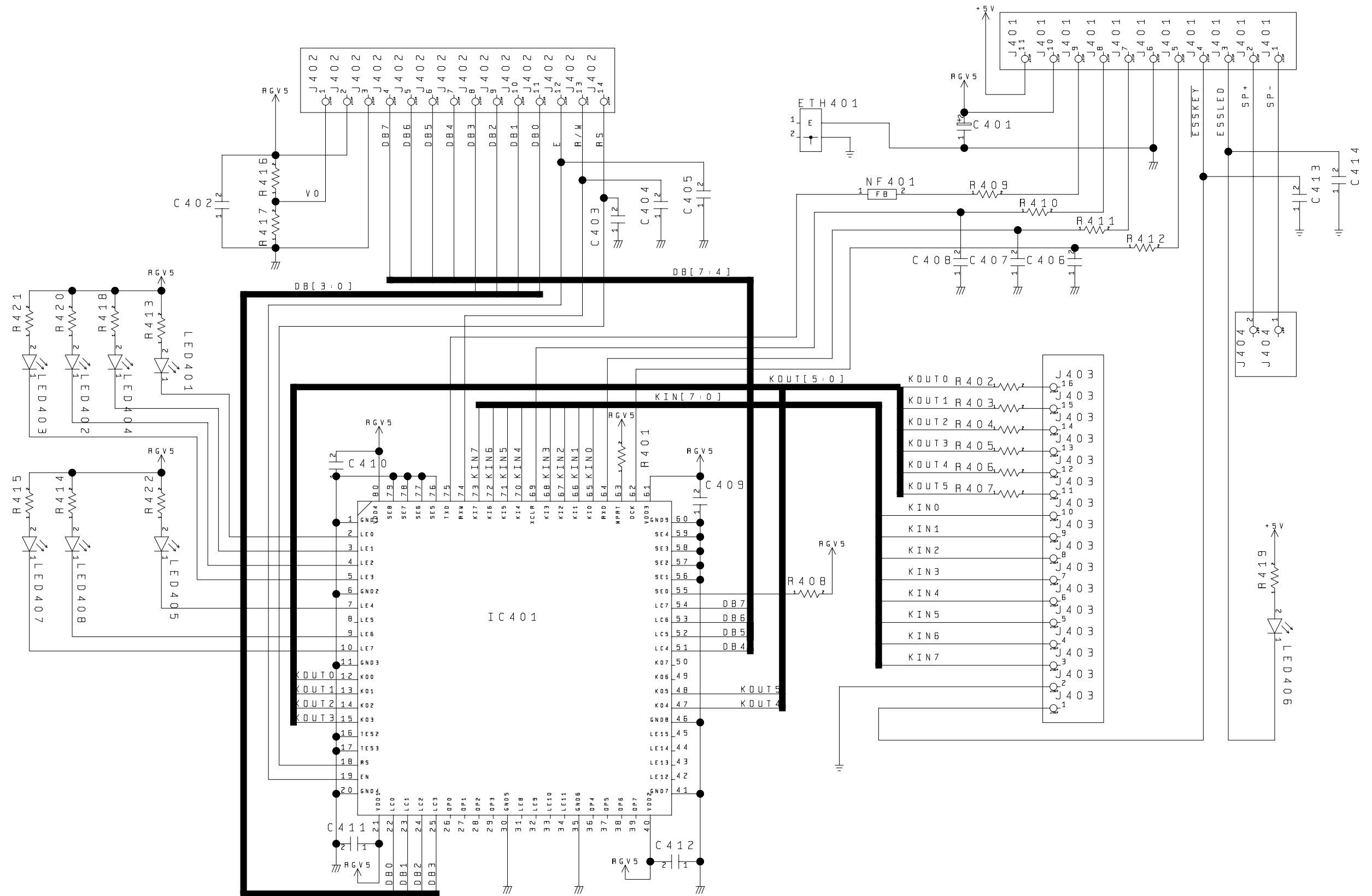




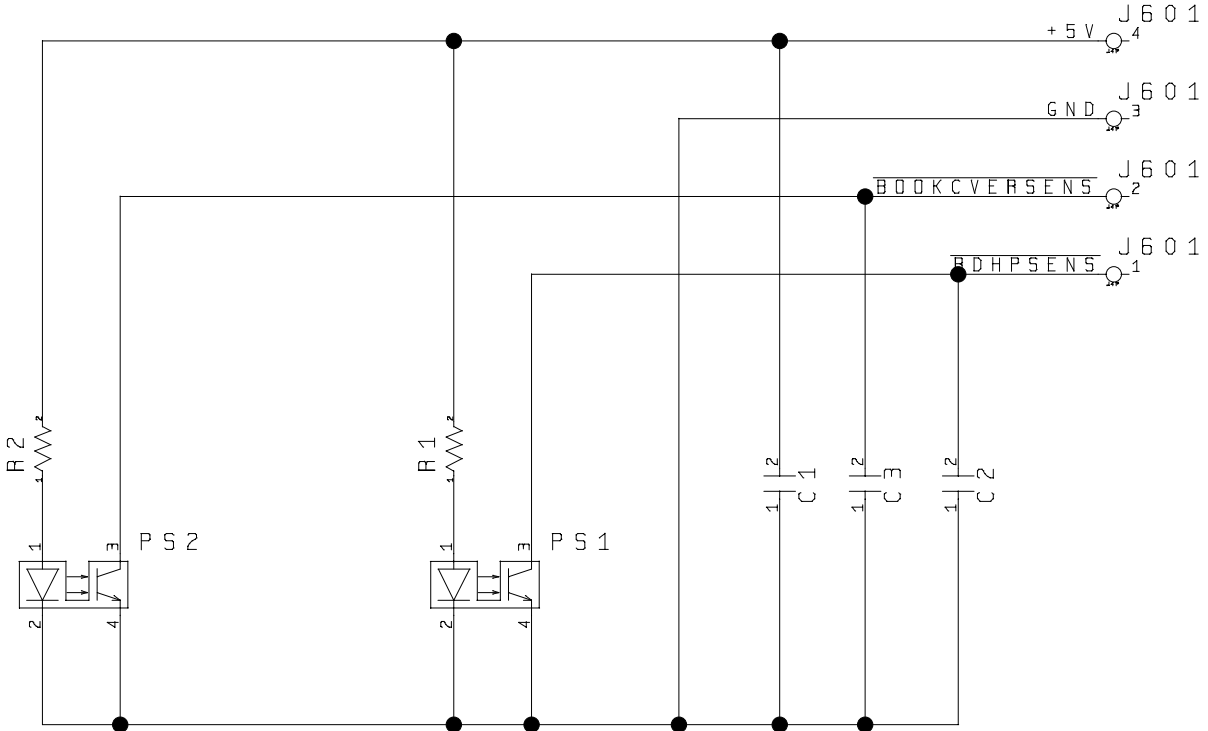


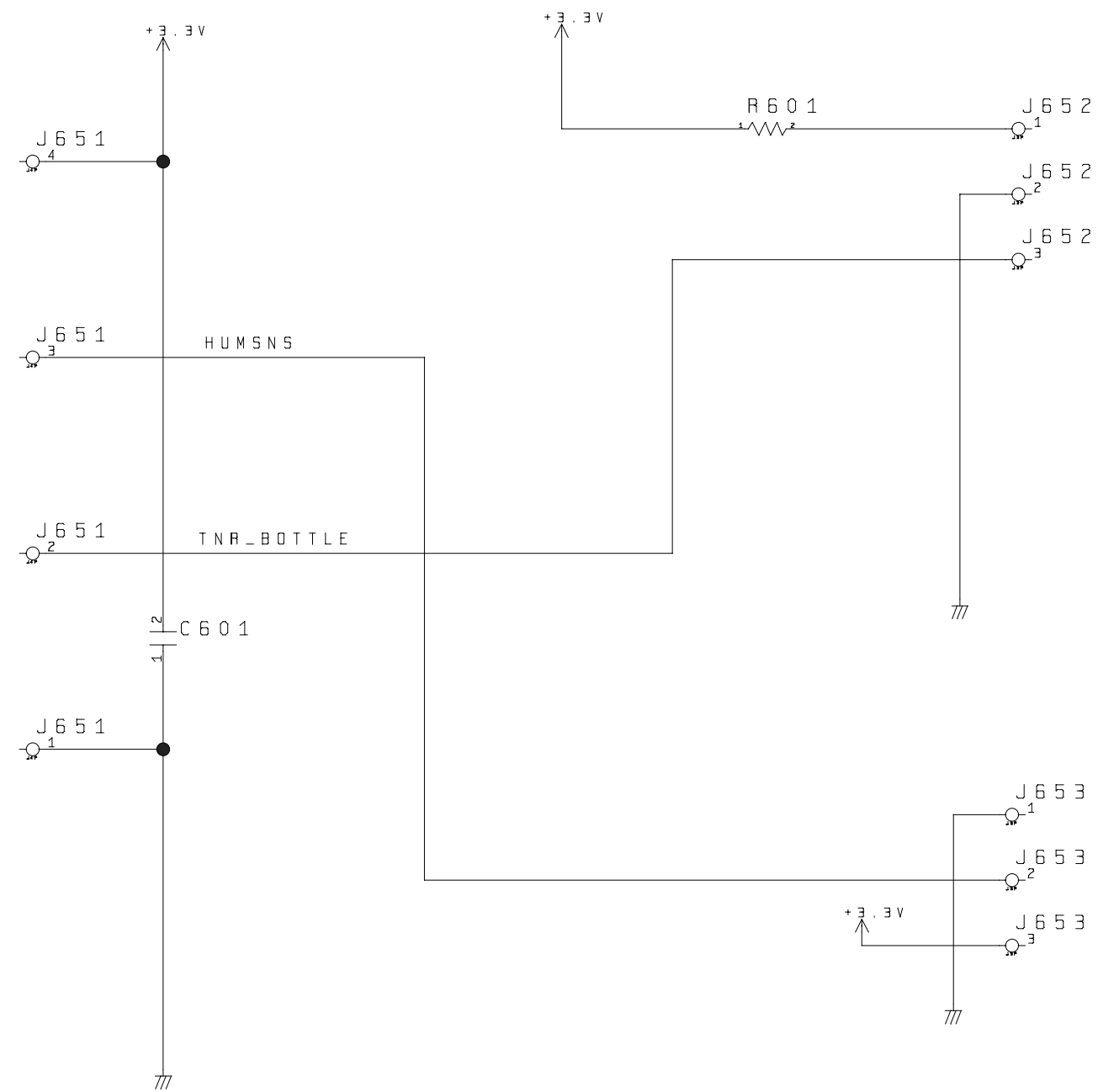


3. CONTROLL PANEL PCB

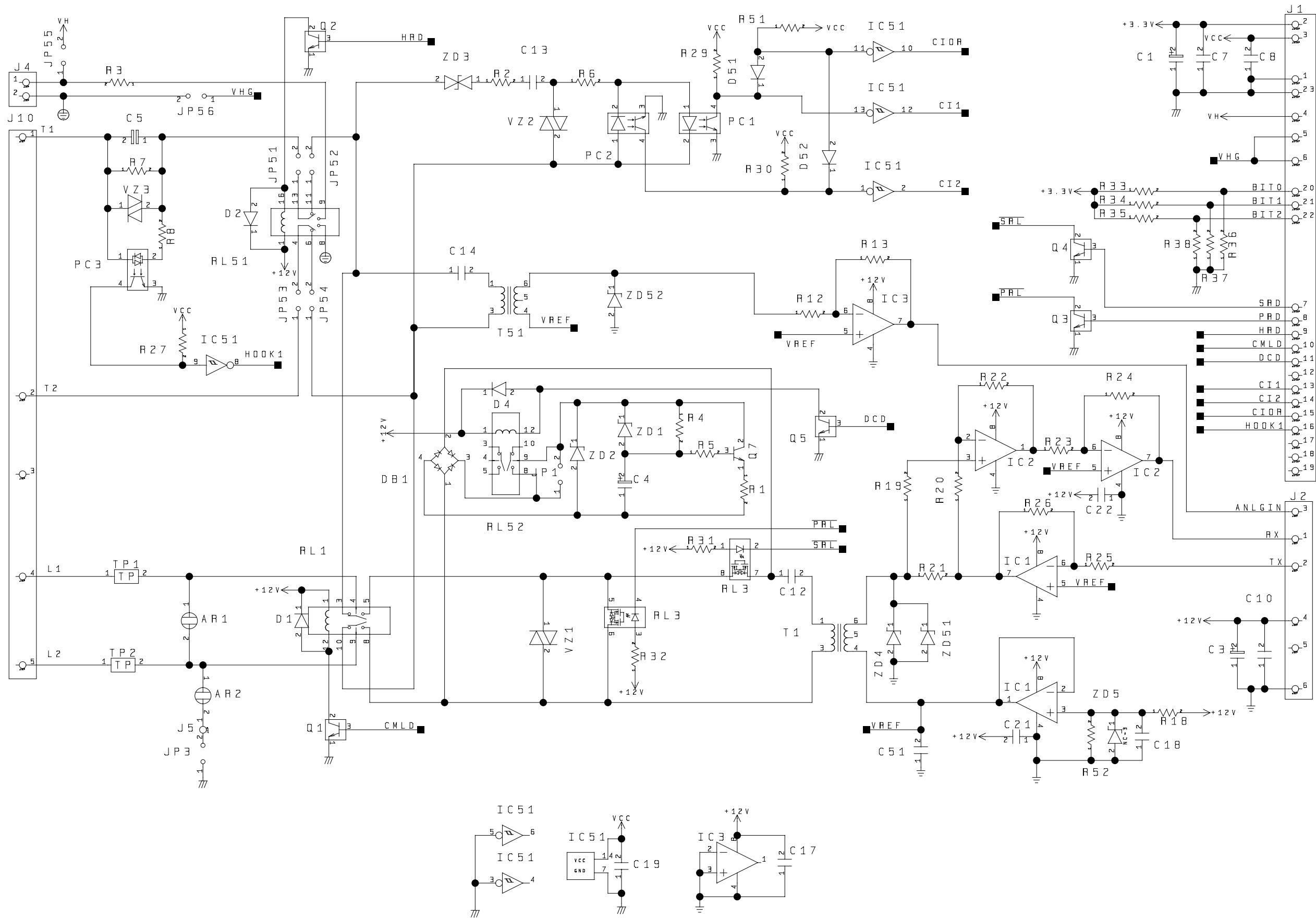


4. SENSOR PCB

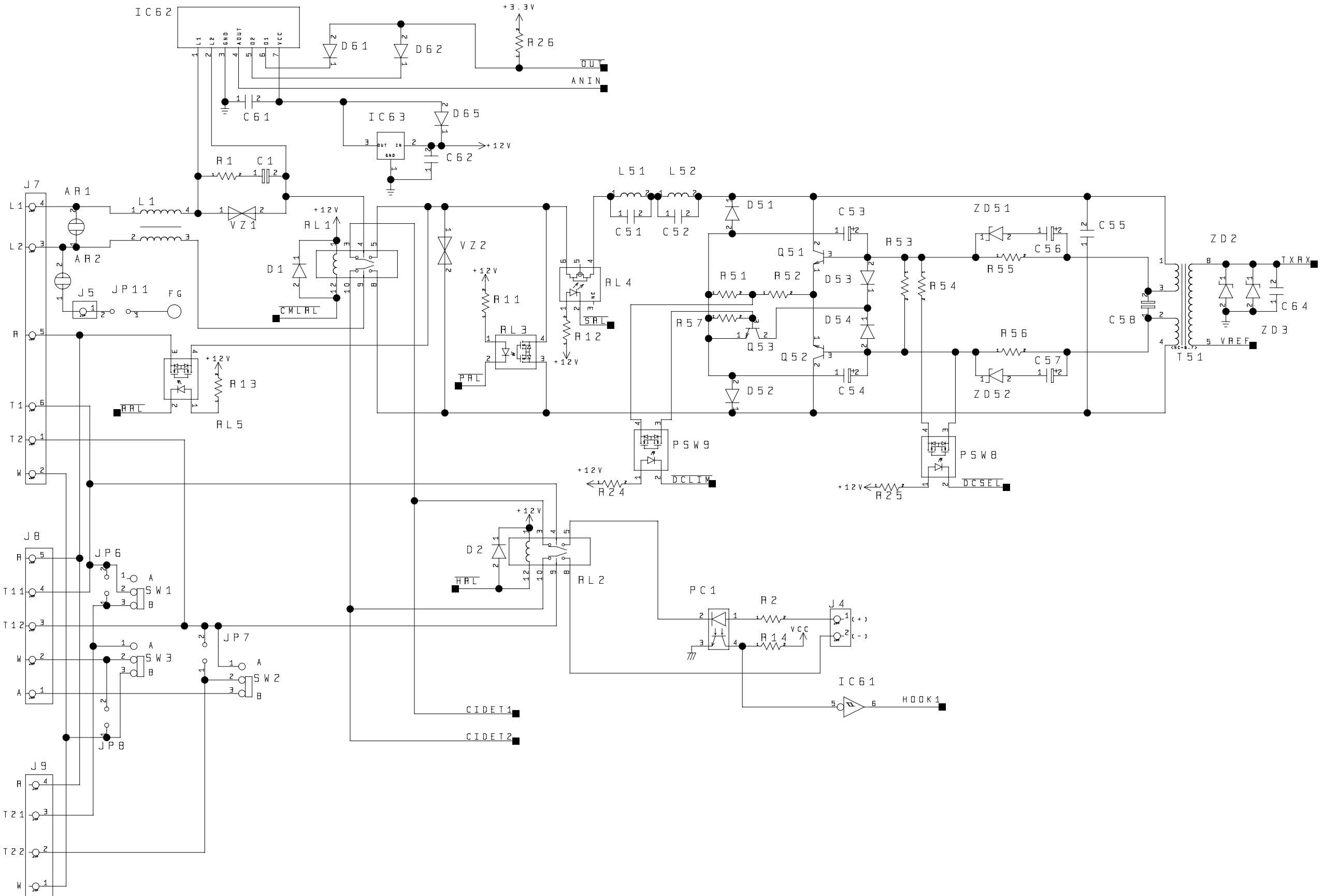


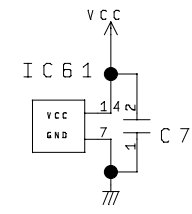
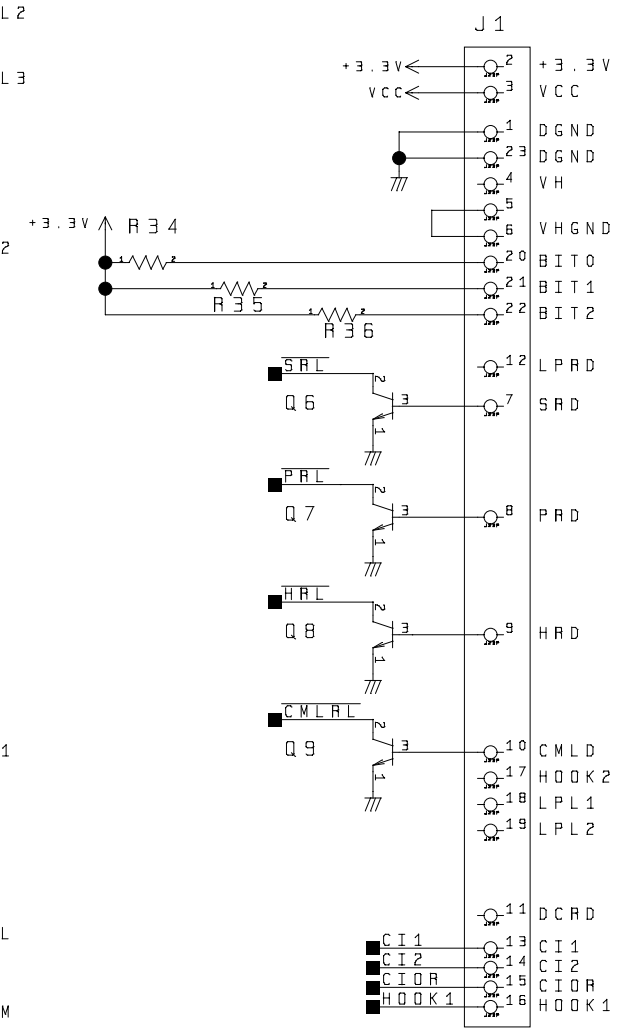
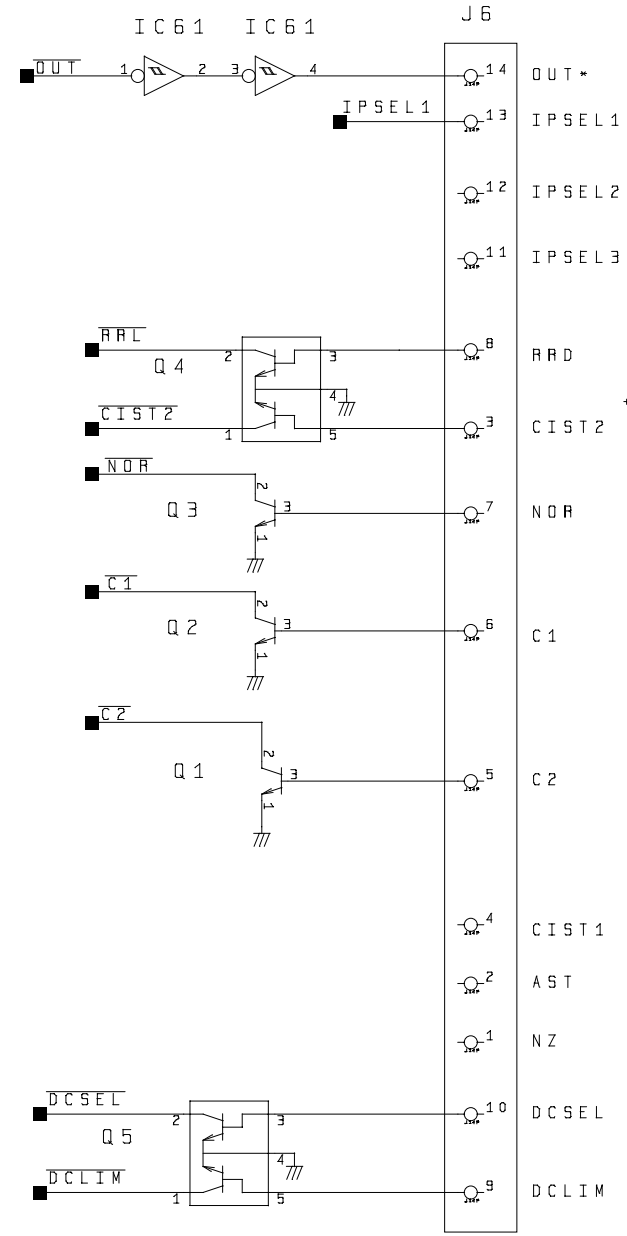
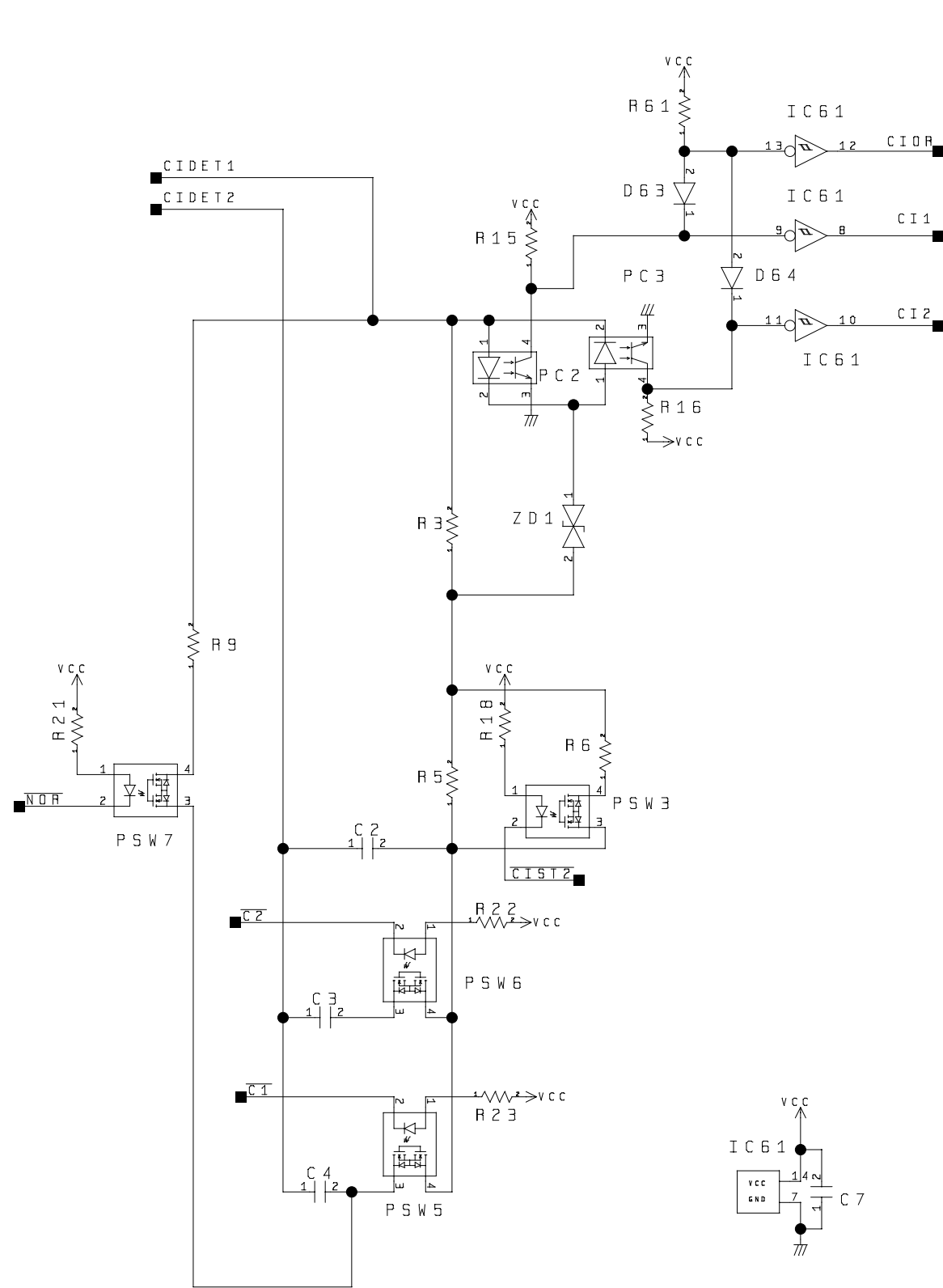


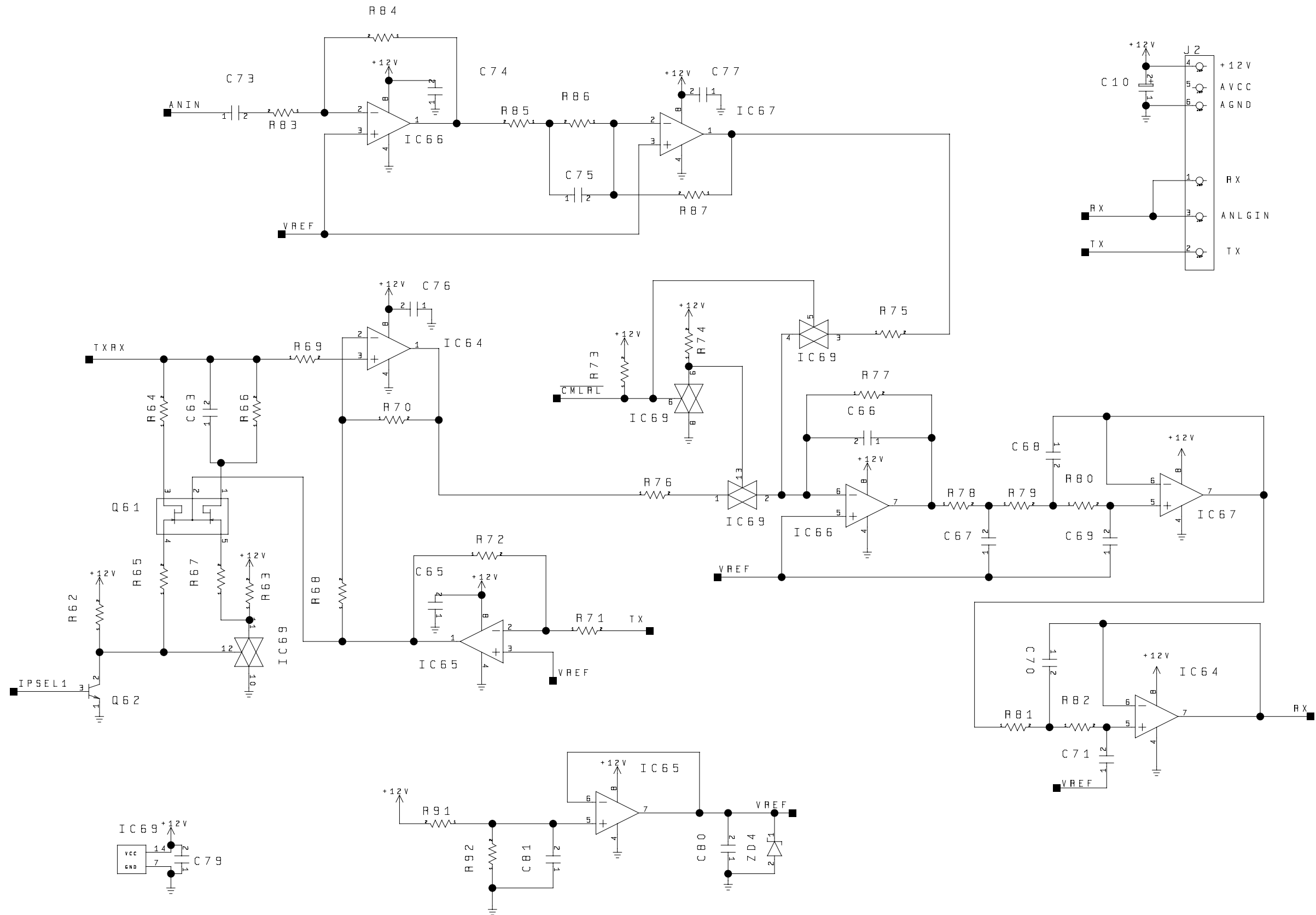
6. NCU PCB (120V/if equipped with fax functions)



7. NCU PCB (230V:EURO/if equipped with fax functions)
 NCU PCB(230V:EURO) [A501](1/3)

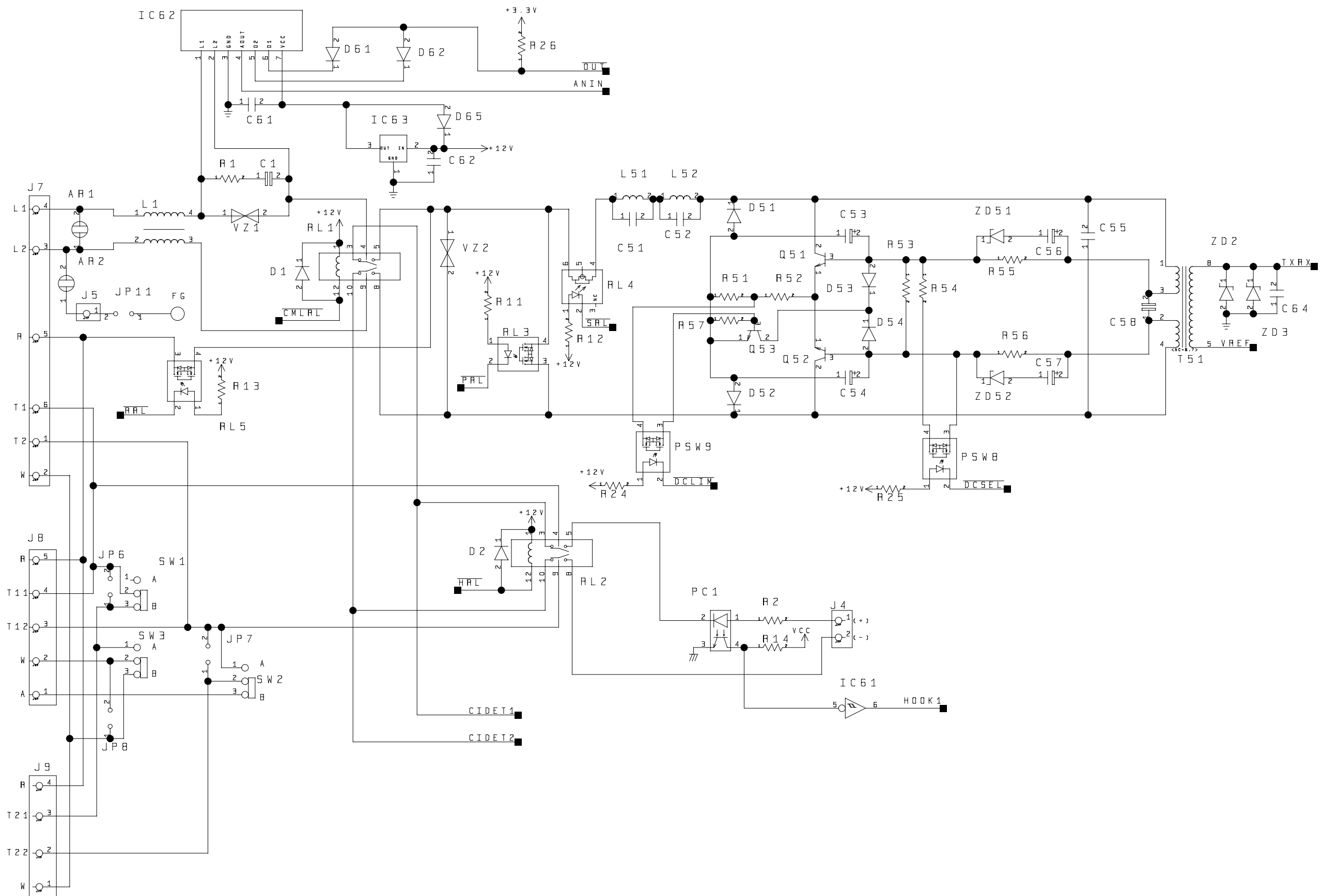


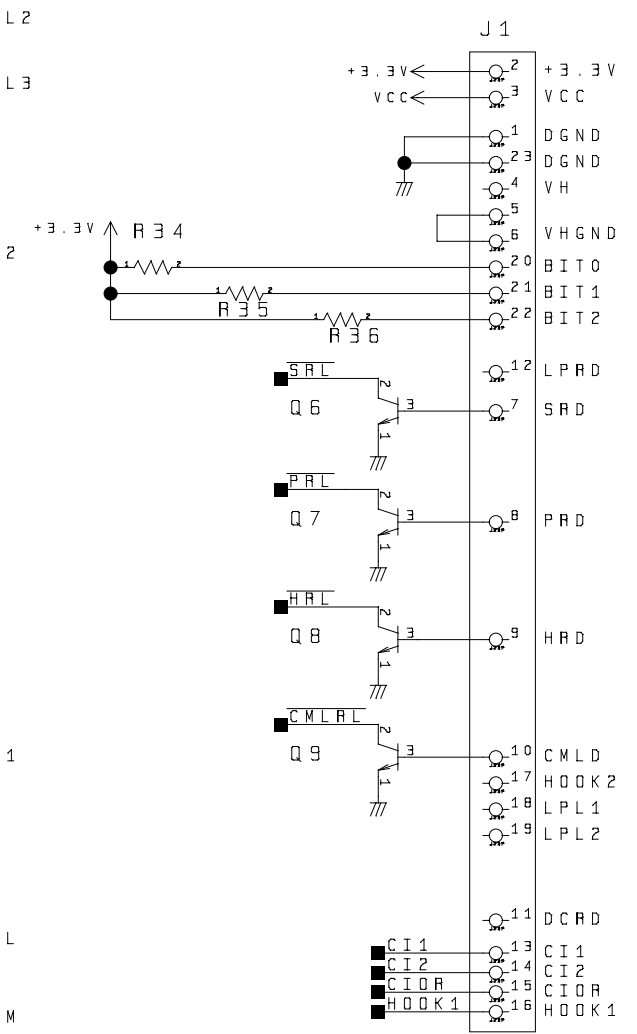
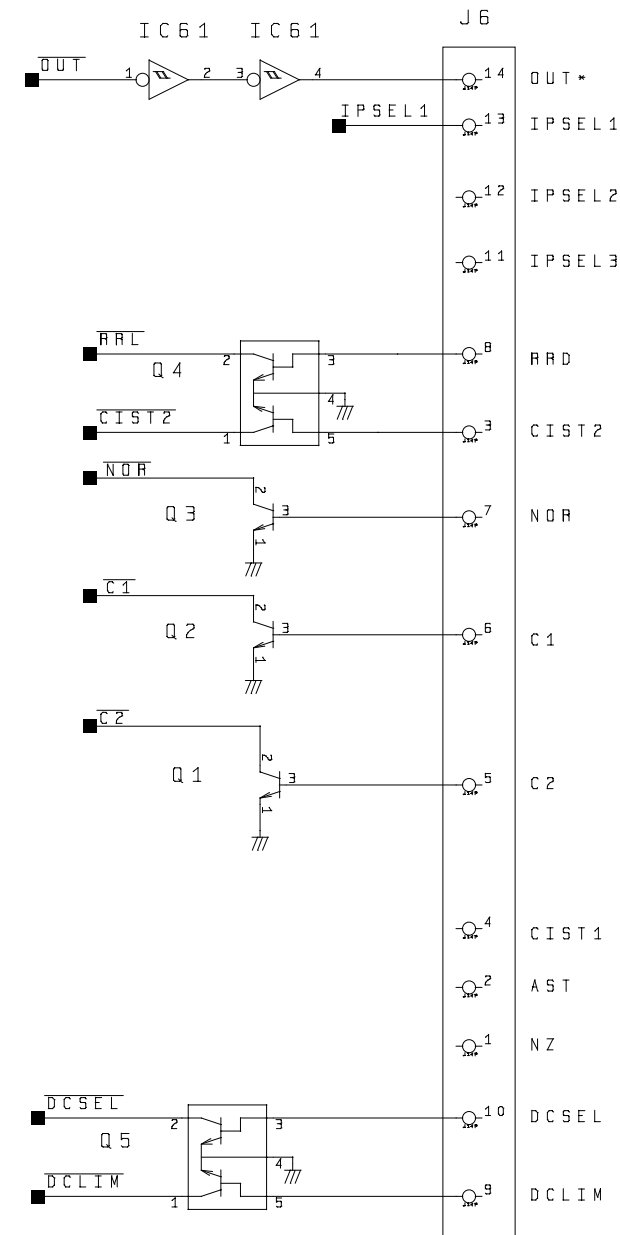
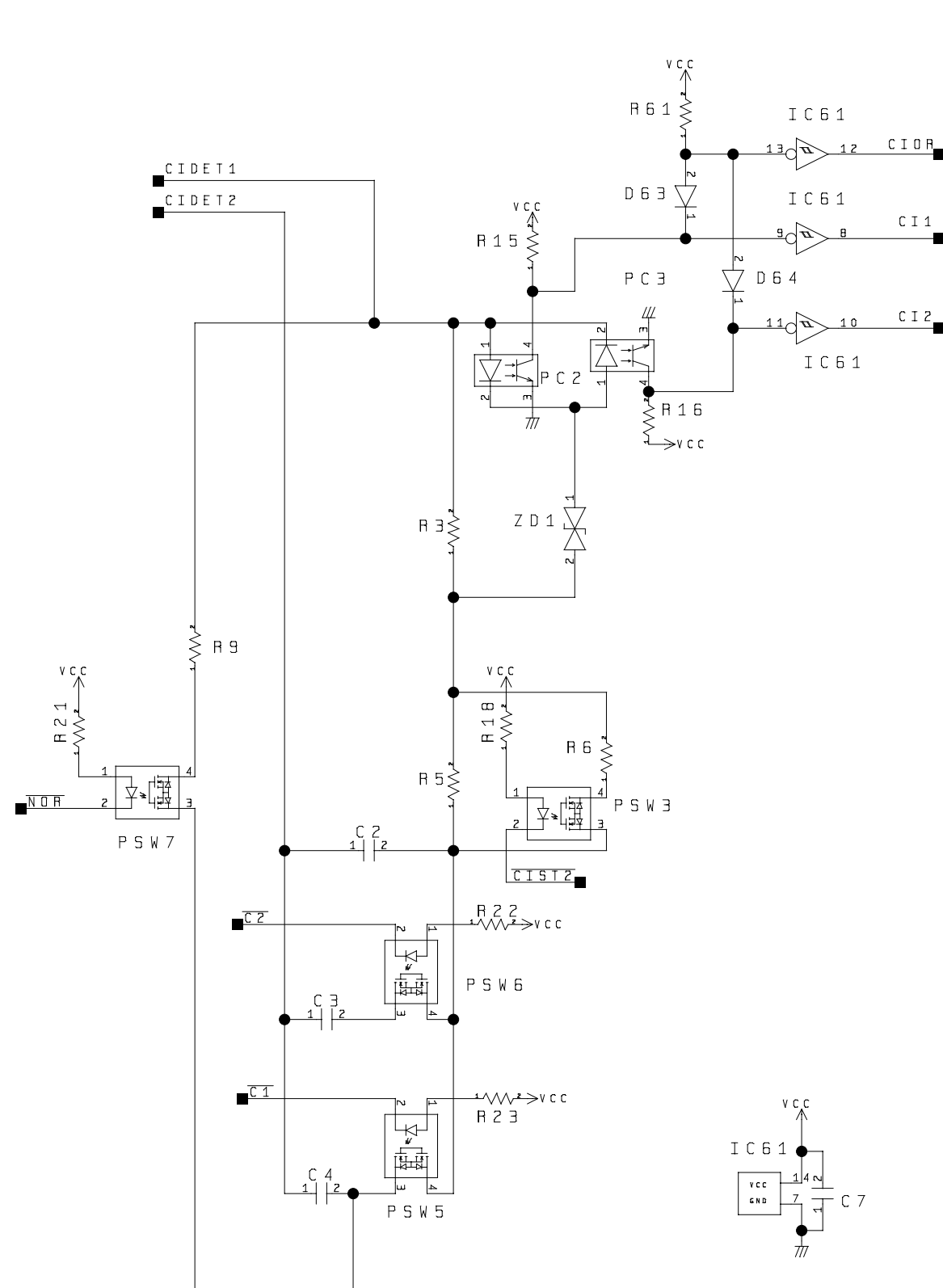




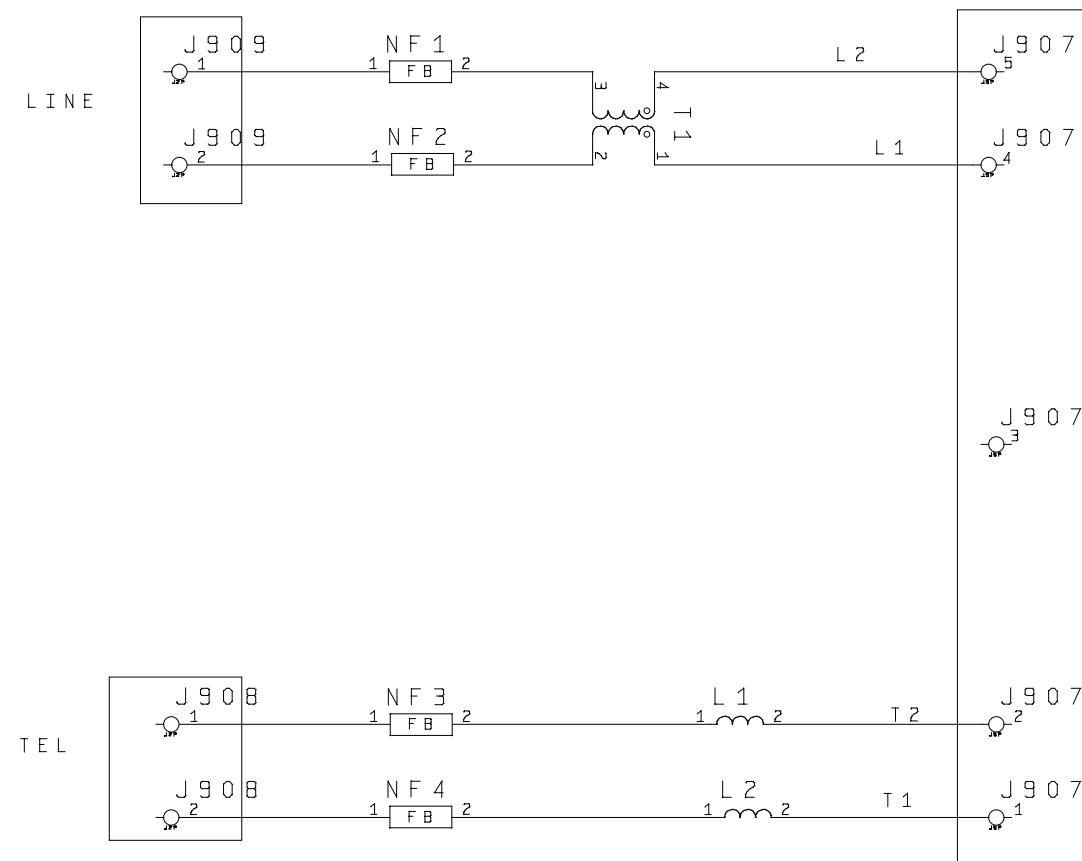
8. NCU PCB (230V:ASIA_OCE/if equipped with fax functions)

NCU PCB(230V:ASIA_OCE) [A501](1/3)

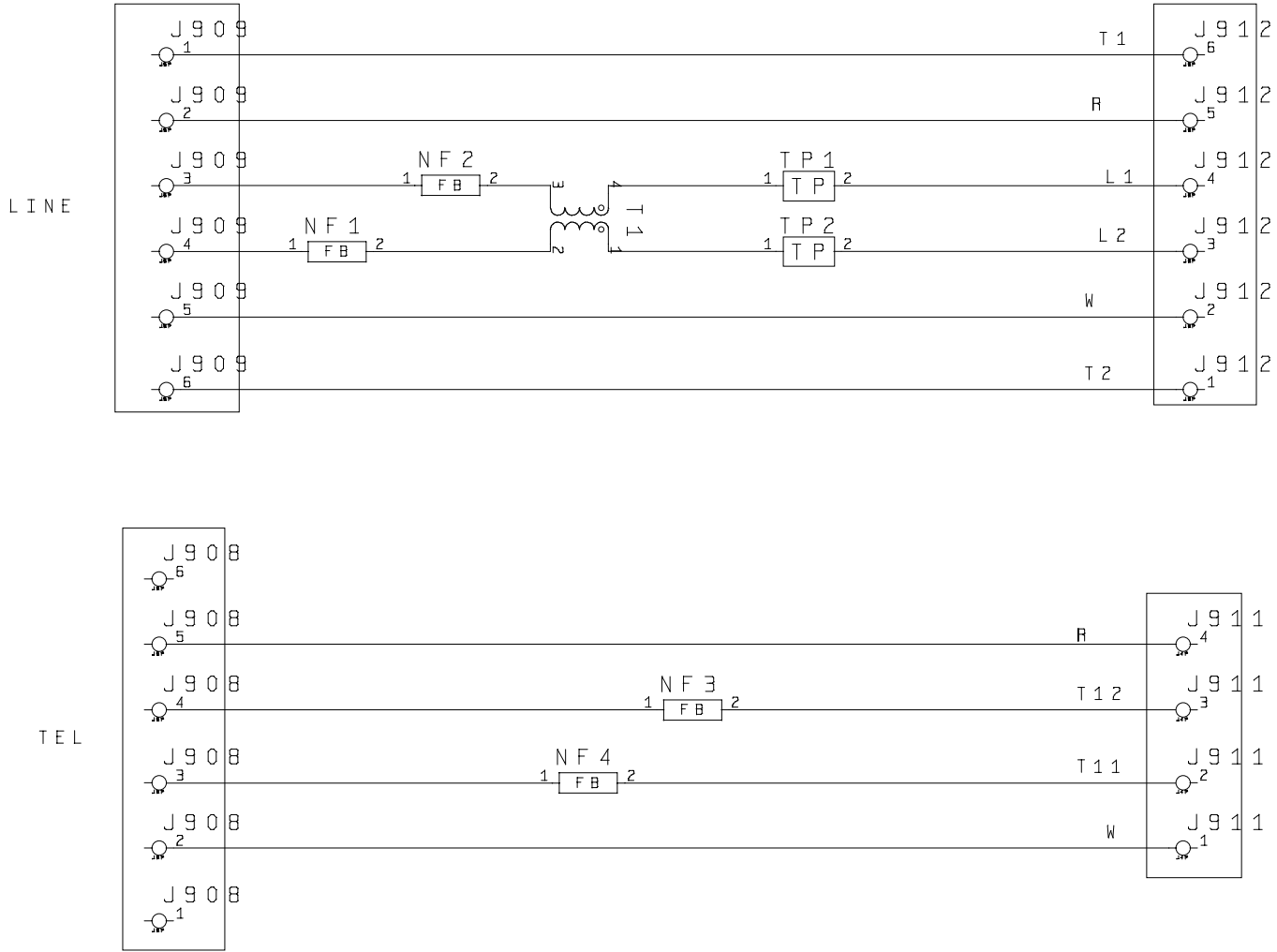




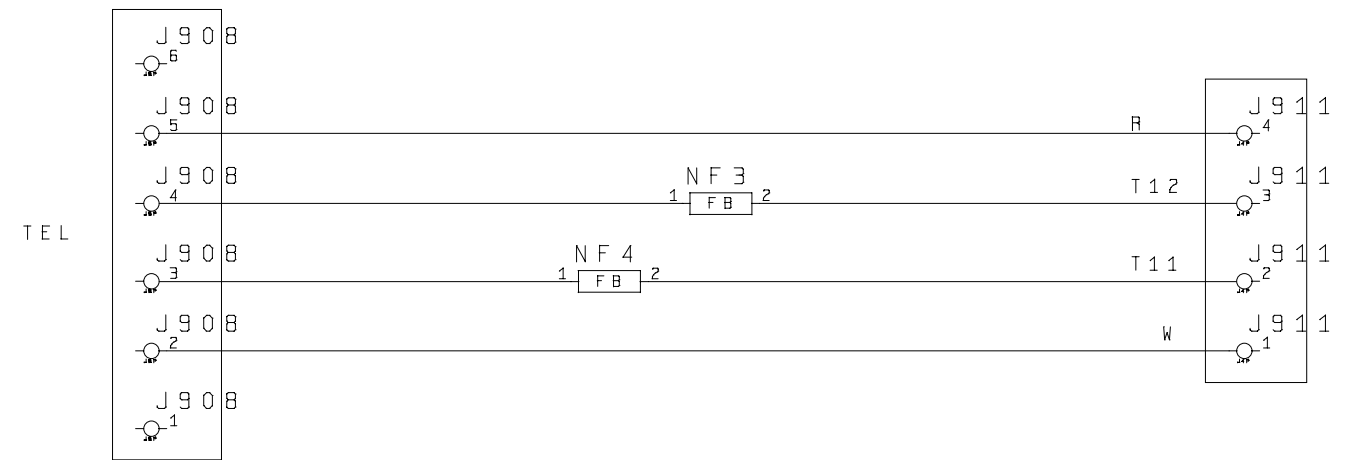
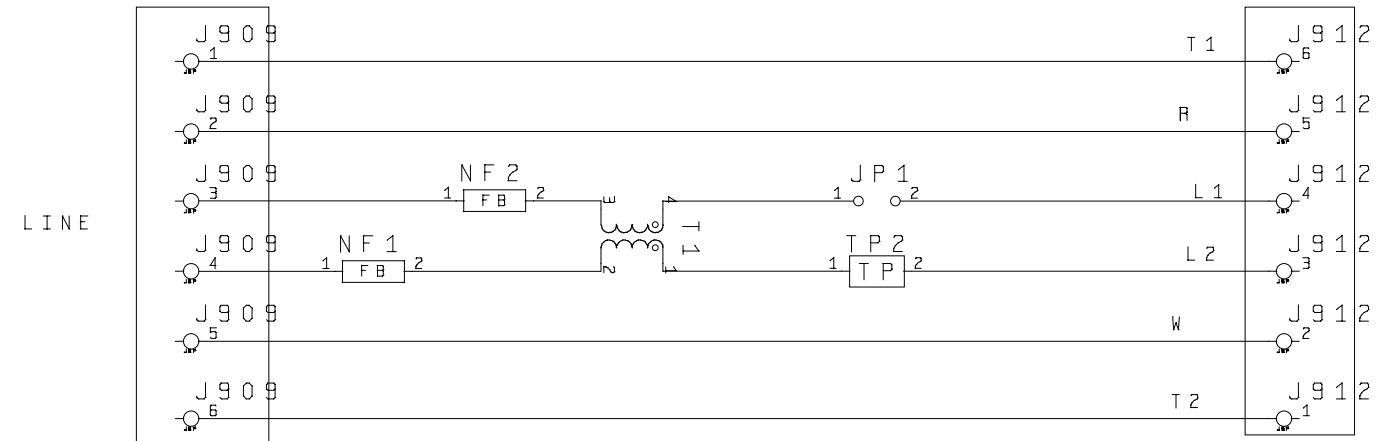
9. MODULAR JACK PCB (120V/if equipped with fax functions)



10. MODULAR JACK PCB (230V:EURO/if equipped with fax functions)

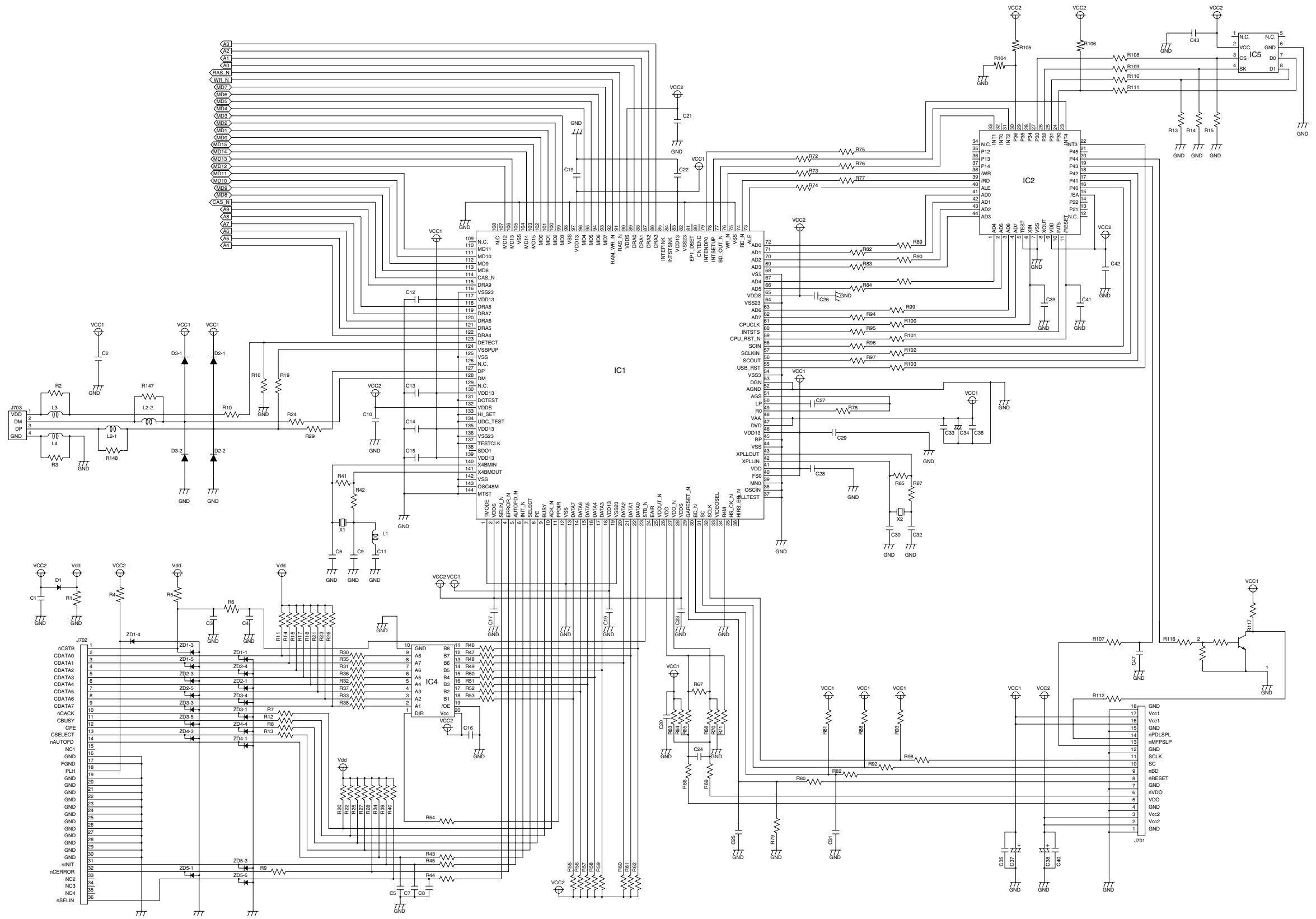


11. MODULAR JACK PCB (230V:ASIA_OCE/if equipped with fax functions)



12. PRINTER CONTROLLER PCB

PRINTER CONTROLLER PCB([A501])(1/2)



**Prepared by
Office Imaging Products Quality Assurance Center**

CANON INC.

REVISION 0 (SEPT. 2002)

5-1, Hakusan 7-chome, Toride-shi, Ibaraki 302-8501 Japan

Canon